

PLOT



MCHAP 2014-2015 Finalists

Mies Crown Hall Americas Prize 2014-2015.

SPBR. Weekend House.

Grafton Architects. New Campus for the University of Engineering and Technology (UTEC).

Llosa Cortegana Arquitectos. Pachacamac Museum.

Alberto Kalach. Tower 41.

Michael Maltzan Architecture. Star Apartments.

SANAA. Grace Farms.

With contributions by Wiel Arets, Dirk Denison, Stan Allen, Ila Berman, Jean Pierre Crousse and Florencia Rodríguez.



Architect SPBR
Partner in charge Angelo Bucci
Design team Nilton Suenaga, Tatiana Ozzetti,
Otto Miguel, Eric Ennser, João Paulo Meirelles de Faria,
Juliana Braga, Fernanda Cavallaro, Victor Próspero
Square meters 270 m² (site), 183 m² (built)
Location São Paulo, Brazil
Years 2010–2011 (project), 2013 (construction)
Consultants Ibsen Puleto Uvo (structure),
Apoio Assessoria e Projeto de Fundações (foundations),
JDP Projetos de Instalações (installations),
Engesolos Engenharia de Solos e Fundações
(geotechnics), Raul Pereira (landscape), Raka (lighting),
Móveis AEME (wooden shuttering), Carlos Augusto
Stefani (metallic shuttering), STW Vidros (glass)
Contractor José Antonio Queiroz Felix
Construction Theobaldo Bremenkamp, Reinaldo
Francisco Ramos

SÃO PAULO





São Paulo is a metropolis of 20 million people, located about seventy kilometers from the coast. Its inhabitants spend a large part of its day sitting in traffic, especially on weekends, when the highways are full of thousands of people trying to get to the beach. The site of this house is located in the central area of São Paulo, between Avenida Brigadeiro Faria Lima (a major avenue) and an important infrastructure line (a highway and a railway), on the edges of Pinheiros River. The lot is also inside the conic projection area corresponding to Congonhas Airport, so all flights arriving from Rio de Janeiro fly right over the house.

In order to avoid driving for long hours on the weekends, the clients developed an unexpected – but logical – program: a weekend house in the center of São Paulo.

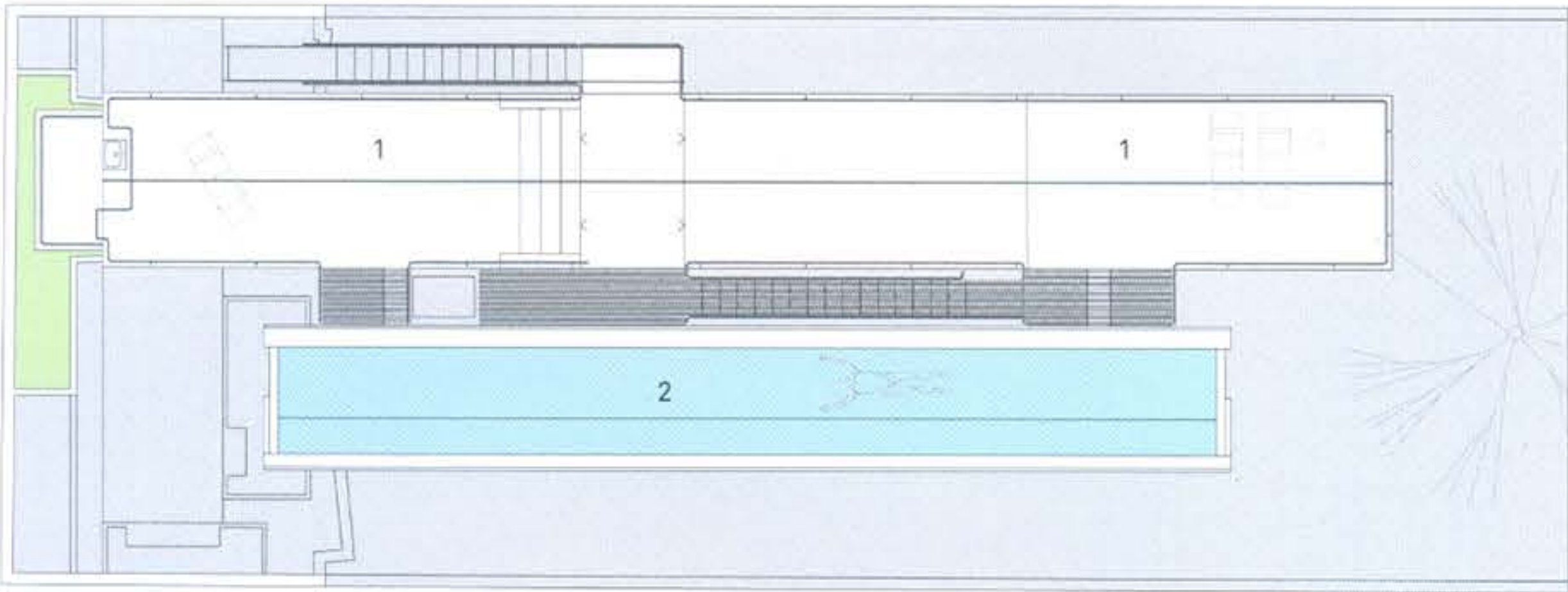
A pool, a sun deck and a garden are the key elements of the project. The rest of the program is made up of a small apartment for the house sitter and a space to cook and receive guests. Since zoning dispositions allow a maximum height of six meters for this part of the city, and all the edges of the site had already been built up to that level, the decision made was to consider the last floor – the only one that receives natural light throughout the entire day – as the project's ground floor. The pool and the sun deck are placed

on this level as parallel massing's. In a one-meter opening located between the two of them, two columns separated by a 12-meter span are placed, which in turn become the supporting structure, through beams, of the pool and the sun deck. The inferior level – the only enclosed space of the house – hangs from the latter without ever touching the ground floor. Structurally, the pool works as the counterweight of the livable spaces. It's almost like making the sea bear the weight of the beach.

The ground floor was left free of any type of construction, in order to achieve the largest possible amount of garden space. The end result is three different layers, each of them with a distinct atmosphere within the house: ground level (an introspective feel, with a garden), the first floor (interior sensation, floating), and the terrace (extroverted and open space).

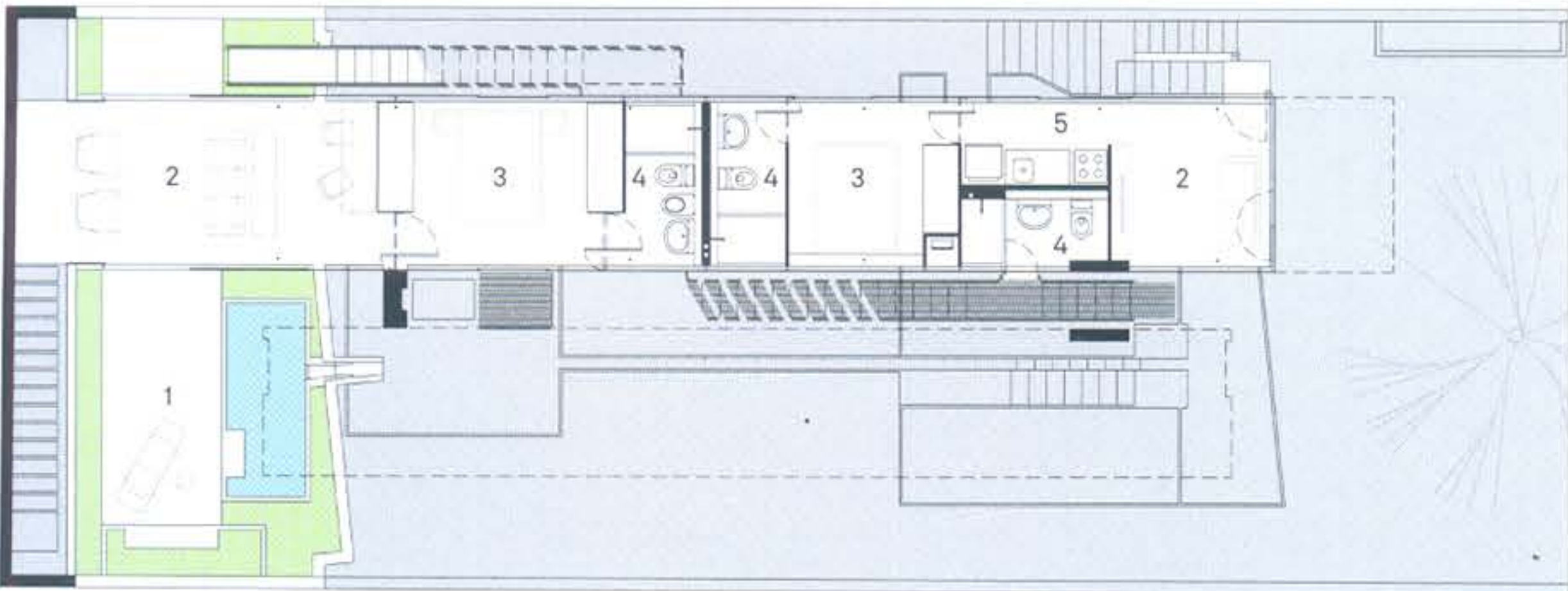
When comparing this house and its program to other architectural projects, there are two fundamental differences that stand out. On the one hand, that the metropolis becomes a place where it is possible to enjoy the weekend; and on the other, that the elements of a house that are generally considered to be secondary are, in this case, the main building blocks. —





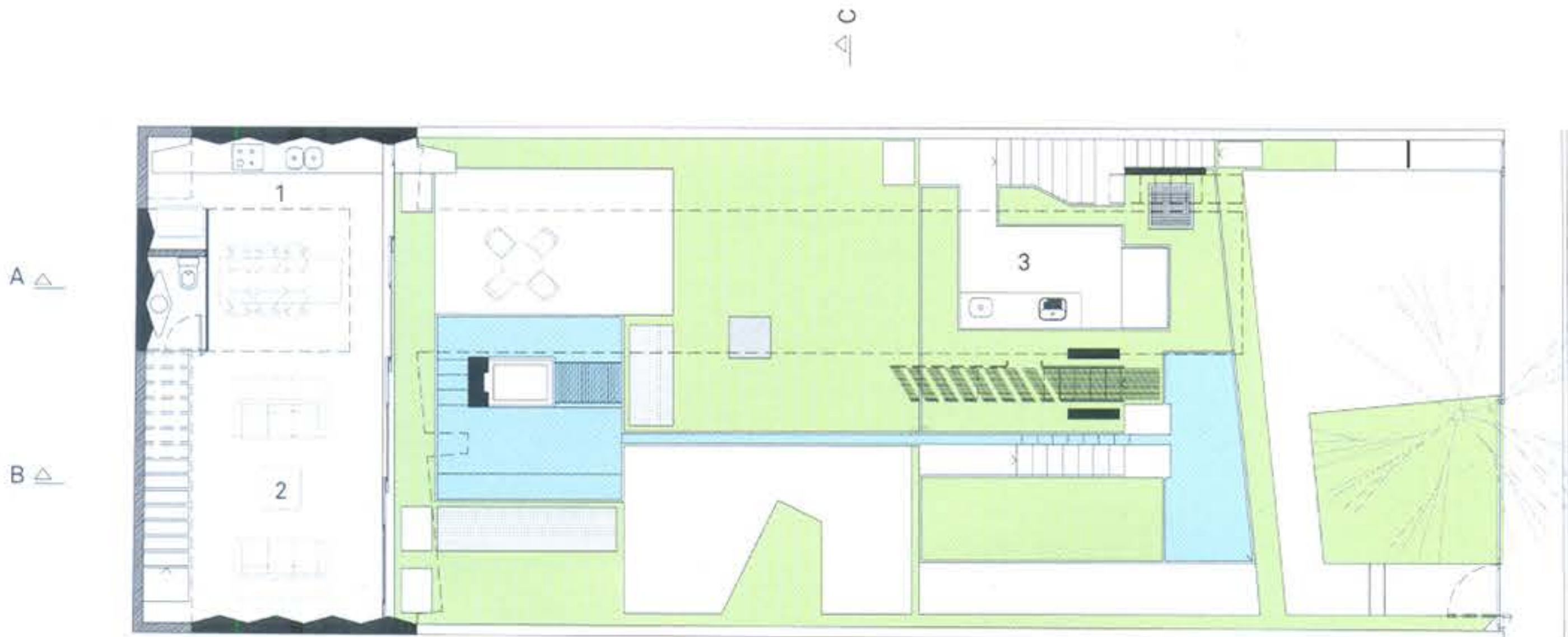
- 1. Sun Deck
- 2. Pool

Level +5.60 m / +6.475 m



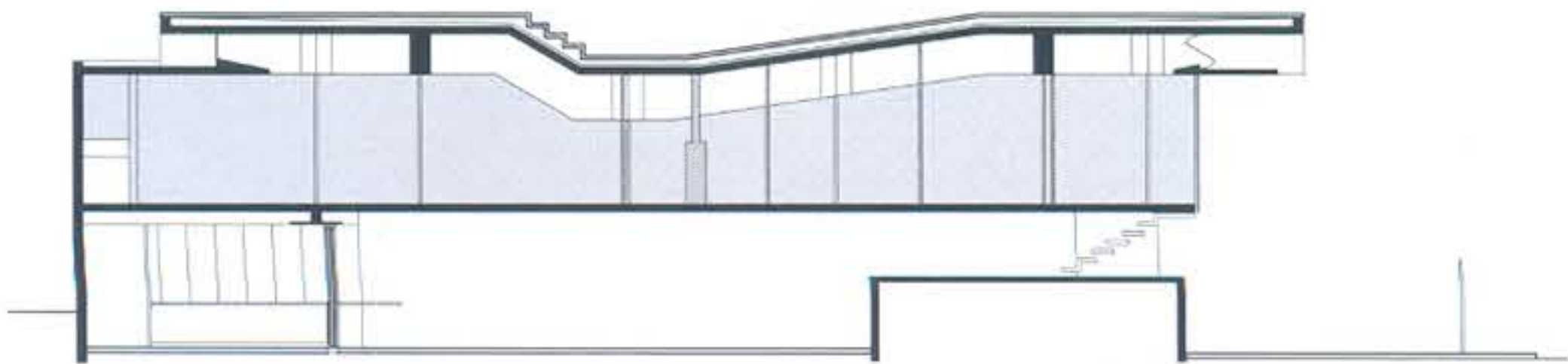
- 1. Terrace
- 2. Living Room
- 3. Bedroom
- 4. Bathroom
- 5. Kitchen

Level +2.80 m

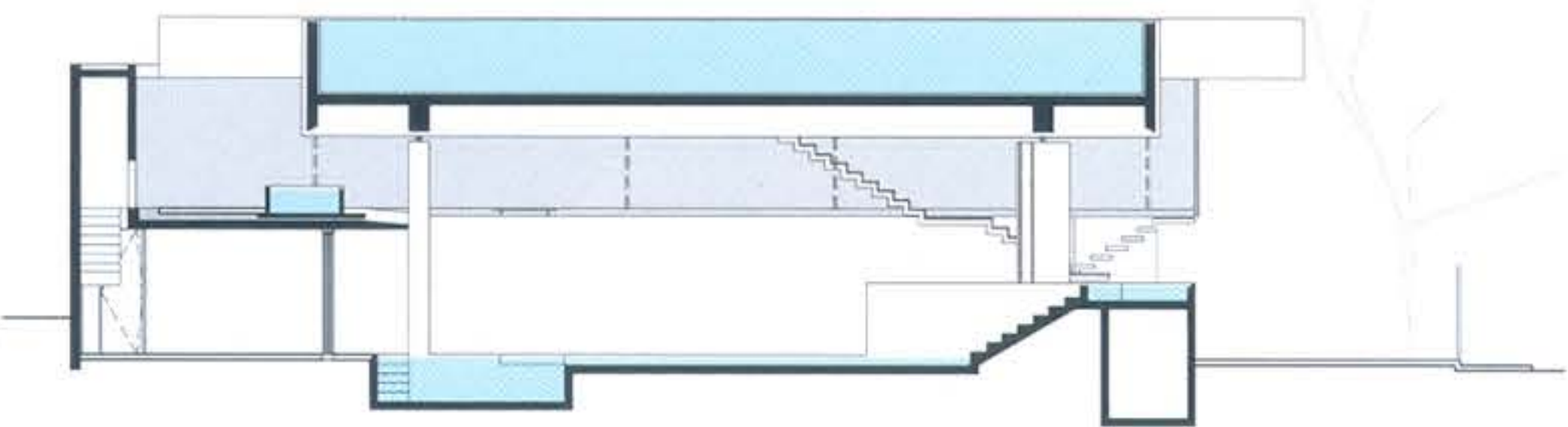


- 1. Kitchen
- 2. Living Room
- 3. Laundry Room

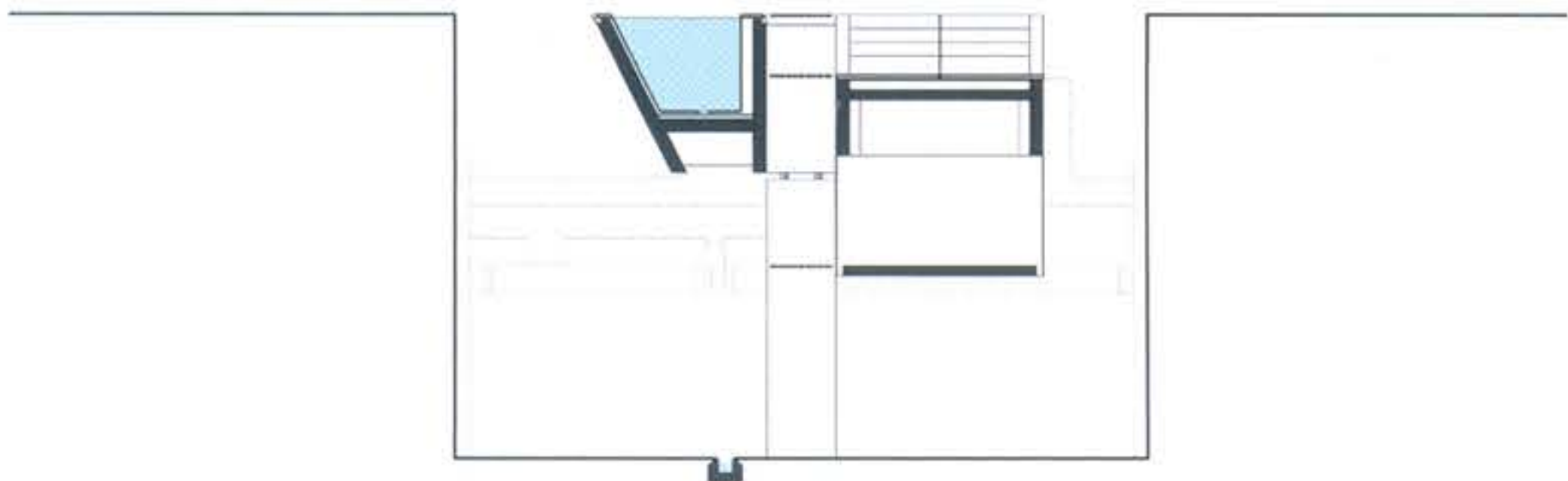
Level 0.00 m / +1.40 m



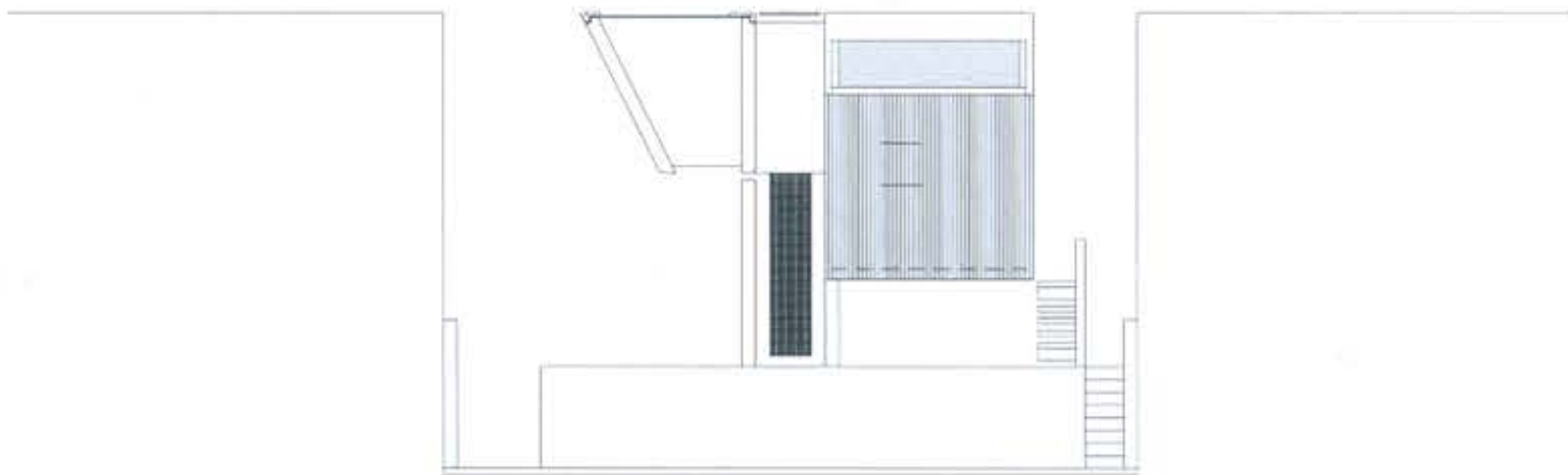
Section A-A



Section B-B



Section C-C



Southeast elevation



"The project not only dims the lines between territory, landscape and architecture, but also generates a vertical stratification of microclimates, from a humid, shadowy and cool environment in the garden to a sunny and hot one on the terrace-sand dune and the pool."

Jean Pierre Crousse



When comparing this house and its program to other architectural projects, there are two fundamental differences that stand out. On the one hand, that the metropolis becomes a place where it is possible to enjoy the weekend; and on the other, that the elements of a house that are generally considered to be secondary are, in this case, the main building blocks.

